



**ROE GREEN WINDOWS**

*— Innovative Glazing Solutions —*



Unit 5, Wembley Park Business Centre, North End Road, Wembley - HA9 0AS  
**T : 020 8903 3550 F : 020 8902 0504 W : [www.roegreen.com](http://www.roegreen.com)**



## WELCOME TO ROE GREEN WINDOWS

Roe Green Windows is a 35 years old double glazing company based in North West London. We are manufacturers and installers of uPVC, Aluminium, Timber and Composite Windows, Doors and Conservatories. We are one of the pioneers in introducing uPVC Windows and Doors in London. Although based in North West London, our ample manpower strength enables us to cover all areas of London and beyond. Owing to our extensive experience, coupled with the remarkable efficiency and quality consciousness of our team, we are today a name to reckon with in providing glazing solutions, in and around London.

Roe Green Windows are committed to providing high quality glazing solutions to private and commercial clients, be it Windows, Doors, Bi-fold Doors, Conservatories, Roofs or Curtain Walling. Having extensive knowledge of the industry and product ranges, our highly experienced design engineers can assist in designing every conceivable glazing requirements. With over three decades of experience in the industry, most of our work comes through recommendations and referrals. Working for private clients, local authorities, businesses, leisure centres, schools, architects and building companies, you can be sure to experience high standards of professionalism and excellent customer service from our well trained staff.

Our edge is definitely the vast experience we possess, spanning over three decades, coupled with an uncompromising quest for perfection and attention to detail. Having served tens of thousands of happy customers in the vicinity of London, we have today grown into a recognized brand in glazing works. Explore our site to learn about the choices we offer, some of the work we have completed and what some of our happy clients have to say about our services.

All the information in this brochure is provided for guidance only and is given in good faith. But without any warranty or guarantee of any kind, whether implied or exceed. Our policy of Continual improvement will mean that product, materials and method of manufacturing may change from time to time without prior notice. Colours in this brochure should be used a Guide only as they will only be as accurate as the printing process allows.



 [www.roegreen.com](http://www.roegreen.com)

# CONTENTS



uPVC Casement Windows



uPVC Vertical Sliders



uPVC Tilt & Turn



uPVC Residential Doors



uPVC Patio Doors



Composite Doors



Conservatories



Aluminium Casement Windows



Aluminium Vertical Sliders



Aluminium Tilt & Turn



Bi-Folding Doors



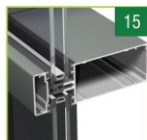
Aluminium Residential Doors



Aluminium Patio Doors



Aluminium Commercial Doors



Curtain Walling

# uPVC CASEMENT WINDOWS

For Innovative Glazing Solutions



FAST TURNAROUND

ENERGY SAVING

HIGH SECURITY LOCKING



Roe Green Windows are authorised manufacturers of REHAU TOTAL-70 UPVC window systems for many years now. REHAU is arguably one of the best UPVC window profile systems. If you're looking for a cost effective & low-maintenance window solution for your home, our REHAU UPVC windows are the right choice for you.

Our A Rated UPVC casement windows offer a comprehensive range of window styles, suitable for all types of buildings. All offer exceptional levels of energy efficiency as well as a choice of aesthetics.

Our UPVC casement windows offer a wide choice of styles and colour finishes, which will fulfil the requirements for a variety of applications both in new build and refurbishment projects.

They are bespoke designed as per your needs and our expert will be happy to assist you in choosing the best window designs in terms of security, energy efficiency and aesthetics. With top or side hinges, you can pick your glazing and finishing touches for a tailored look and high performance.





# uPVC VERTICAL SLIDERS

For Innovative Glazing Solutions



QUICK TURNAROUND

ENERGY EFFICIENT

SECURED LOCKING

AMPLE OF COLOURS



**Our vertically sliding sash windows add elegance and period grandeur to your home.**

Specially engineered to reduce draughts and increase security, our range of vertical sliders are a striking and efficient way to allow light and air into your home.

Modern UPVC sliders are designed to give you all the traditional elegance of classic sash windows nullifying all maintenance costs. With excellent protection against draughts, a revolutionary tilting mechanism to aid in cleaning and maximum security.

Our vertical sliders are the perfect choice for all tastes and budgets.



# uPVC TILT & TURN WINDOWS

For Innovative Glazing Solutions



QUICK TURNAROUND

ENERGY EFFICIENT

SECURED LOCKING

AMPLE OF COLOURS



**Our UPVC tilt and turn windows are simple and smart with a contemporary style, the optimal choice for easy cleaning secure ventilation.**

Their large openings provides ideal solution to have large ventilation and maximum glass. Their internally beaded mechanism achieving BS 7950 make them highly secured against break-ins. The tilt only facility gives you excellent ventilation while keeping them secured, mainly on high rise properties.

Tilt and turn windows are ideal for high rise properties but many residential owners also opt for them nowadays. Their crisp, modern style suits any type of property, while energy-efficient materials will help to keep you warm – and your heating bills low.



# uPVC Residential Doors

For Innovative Glazing Solutions



QUICK TURNAROUND

ENERGY EFFICIENT

MULTIPOINT LOCKING

AMPLE OF COLOURS



We manufacture uPVC doors in our factory using latest manufacturing techniques. uPVC doors are long lasting, virtually maintenance free and are available in various colours and designs suitable to various elevations of your property. We manufacture doors in REHAU uPVC system which is a leading brand name in UK & Europe. As they are manufactured in-house, we confidently guarantee their thermal efficiency and security.

Our REHAU uPVC doors won't fade or discolour over years.

Our uPVC doors are built to last for decades & not years. They are manufactured using modern manufacturing techniques providing bespoke design solutions.



## uPVC PATIO DOORS

For Innovative Glazing Solutions



QUICK TURNAROUND

ENERGY EFFICIENT

MULTIPOINT LOCKING

AMPLE OF COLOURS



With our uPVC sliding patio doors, strength, stability and excellent impact resistance are ensured by thick profile gauge, welded joints and galvanised steel reinforcement. Slim & chamfered profile designs of our patio doors match our uPVC windows and residential doors making our patio doors ideal for conservatories and sun rooms.

With our uPVC patio doors fitted, you will be warm, cosy, draught proof and safe no matter what the weather. Whether traditional or contemporary, town or country, we have patio doors to suit every style of property and with their maximum glazing area and clean lines, our doors are the perfect way to enjoy your garden all year round from the comfort of your home.



# COMPOSITE DOORS

For Innovative Glazing Solutions



QUICK TURNAROUND

ENERGY EFFICIENT

HIGHLY SECURED

AMPLE OF COLOURS



Composite doors are the latest trend in the market when it comes to opting for Front Entrance doors. Our renowned ENDURANCE Composite doors are known for their solidity and security. Timber core composite doors are the only choice when it comes to securing your home and your family. Our 48mm thick solid timber door slab is even sledgehammer proof



You can choose from our diverse range of styles; our Classic Collection draws inspiration from the Georgian and Victorian eras, whilst doors in our Urban Collection add a contemporary feel to your property.

If you are in a rural home (or just love the style), it is not a problem. Our Country Collection has a selection of doors perfect for your country cottage or rural farmhouse.



# CONSERVATORIES

For Innovative Glazing Solutions



QUICK TURNAROUND

ENERGY EFFICIENT

SECURED BESPOKE DESIGNS



A conservatory is the ideal way to add light and space to a house and with our full range of UPVC and thermally broken aluminium conservatory profiles with excellent natural insulating properties, allowing you to bring outdoors into your home.

Choose from our variety of classic roof styles including Edwardian, Elizabethan, Lean To, P Shaped, Regency, T Shaped, Victorian and configure it to create your dream summer room. Add patio doors, Georgian bars, sandblasted glass, integral blinds, full-height tilt and turn windows, self-cleaning glass units or any number of options from our complete suite for a truly customised conservatory with beautiful styling designed to blend seamlessly into your home.

Choose from a huge range of finishes, including classic white, single colours, dual colours, foiled woodgrains, silver anodized or any RAL colour

# ALUMINIUM CASEMENT WINDOWS

For Innovative Glazing Solutions



QUICK TURNAROUND

ENERGY EFFICIENT

SECURED BESPOKE DESIGNS

AMPLE OF COLOURS



Doesn't matter what your taste is, be it traditional or contemporary, we have a solution to meet your aluminium window specifications such that it suits your home with a variety of sculptured profiles & designs available.

We use multi-point shoot bolt locking mechanism as Standard on all our aluminium windows to BS- 7950. Aluminium windows are amongst the most durable and environmentally friendly windows available with a lifespan measured in decades and excellent green credentials. Thanks to their endless recyclability. Aluminium alloy's inherent strength combined with modern polyamide thermal break technology allows us to offer slim line sections and large glass area along with excellent insulating properties.

It easily meets current building regulations giving you great energy saving and thermal efficiency.



# ALUMINIUM VERTICAL SLIDERS

For Innovative Glazing Solutions



QUICK TURNAROUND

ENERGY EFFICIENT

SECURED LOCKING

AMPLE OF COLOURS



Designed to provide slim, neat lines of traditional sash windows in a high-strength, sustainable and low maintenance alternative, our aluminium vertical sliders are equally suitable for replacing their traditional counterparts, and for bringing the classic look of sash windows into new homes.



Not only are our aluminium sliders superior in terms of durability, but their unique polyamide construction gives them state of the art thermal performance, allowing you to keep your desired look whilst meeting strict new building regulations for thermal efficiency. A dual colour scheme, and innovations such as internal beading, tilt-in cleaning and integrated trickle ventilation bring this classic design into the modern age.

# ALLUMINIUM TILT & TURN WINDOWS

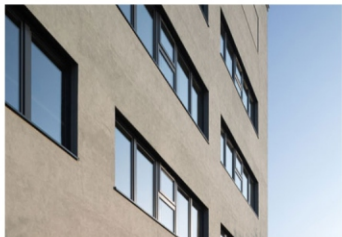
For Innovative Glazing Solutions



QUICK TURNAROUND

ENERGY EFFICIENT

SECURED BESPOKE DESIGNS



Suited for both residential and commercial applications, our aluminum tilt and turn windows provide an ideal solution for high-rise applications where internal glazing and ease of cleaning are essential.

With internal beading as standard and our regular testing to BS7950 for enhanced security, tilt and turn windows are also extremely well suited to installations where security concerns are paramount.

Our tilt and turn windows embrace the modern aesthetic of more glass, less frame, offering large openings, broad unobstructed views and extremely low U values, making them a perfect choice for new developments and renovations alike.





# BI-FOLDING DOORS

For Innovative Glazing Solutions



QUICK TURNAROUND

HIGHLY SECURED

ENERGY SAVING

GREAT AESTHETICS



Bi-folding doors are an ultimate option in luxury as there is no better way of connecting your home with your garden. The folding principle of this high quality system allows you to combine thermal comfort and transparency, with the choice to open inside & outside of the building to suit your needs. The elements come in every colour and finish, if desired offering a different colour for the interior and the exterior, all in order to perfectly match the building.



There's no need to worry about your heating bills or security, as they're highly energy-efficient and fitted with the best locking system available. Our aluminium bi fold doors open concertina style to create a stunning open space and an unimpeded view of your garden.

When closed, they create a wall of light and an unrivalled feeling of spaciousness.





# ALUMINIUM RESIDENTIAL DOORS

For Innovative Glazing Solutions



QUICK TURNAROUND

HIGHLY SECURED

ENERGY SAVING



Tailor made aluminium doors that provides safety, security & style to your residence. Doors manufactured with sturdy aluminium profiles with latest Polyamide thermal break technology, highly secured multi-point locking mechanism.

Our doors offer strength, security & durability with desired thermal efficiency. Profiles capable of accommodating variety of glazing options enhancing aesthetics of your door & property.



# ALUMINIUM SLIDING PATIO DOORS

For Innovative Glazing Solutions



HIGHLY SECURED

ENERGY SAVING

SMOOTH OPERATION



Our aluminium systems sliding patio doors which are sleek and space saving, lets the light & fresh air stream into your home. Smooth to open and close, you can choose your sliding door from a wide range of colours. They are energy efficient & secured with locking mechanism compliant with latest safety standards.



With slim profile lines our doors achieve large glazing sight lines & with smooth & effortless operation our patio doors become an ideal choice for our clients to achieve panoramic views and easy access to rear gardens, balcony and communal areas. With latest polyamide thermal break profiles our doors achieve desired thermal efficiency to comply with latest building regulations

# ALUMINIUM COMMERCIAL DOORS

For Innovative Glazing Solutions



THICKER SECTIONS

SMOOTH OPERATION

DURABLE



A perfect solution for shop fronts, public entrances & communal areas. We offer full range of rebated & anti-finger trap commercial aluminium doors designed for security & durability.

We offer wide range of profiles capable of accommodating variety of security hardware and glazing options to suit your project specifications. Also our expert technicians can help you choose best options in terms of security & strength.



# CURTAIN WALLING

For Innovative Glazing Solutions



QUICK TURNAROUND

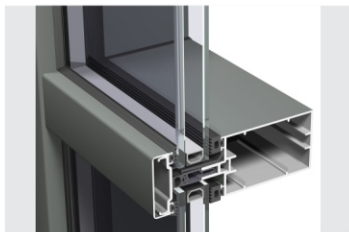
HIGHLY SECURED

DURABLE

SMART AESTHETICS



Aluminium Curtain walling screen creates high performance, impressive & functional facades designed to allow maximum solar penetration inside the building. Designed to achieve all current standards of thermal insulation, air permeability, wind resistance & water penetration our curtain walling screens can incorporate Fixed lights, opening vents, louvre ventilation and a wide range of commercial door options





## OUR PROJECTS





Windows ▴

Doors ▴

Patio Doors ▴

Bi-Folding Doors ▴

Composite Doors ▴

Glass Units ▴

Porches ▴

Conservatories ▴

Curtain Walling ▴

Shop Fronts ▴



**ROE GREEN WINDOWS**

— *Innovative Glazing Solutions* —

Unit 5, Wembley Park Business Centre, North End Road, Wembley - HA9 0AS

**T: 020 8903 3550 F: 020 8902 0504 W: [www.roegreen.com](http://www.roegreen.com)**